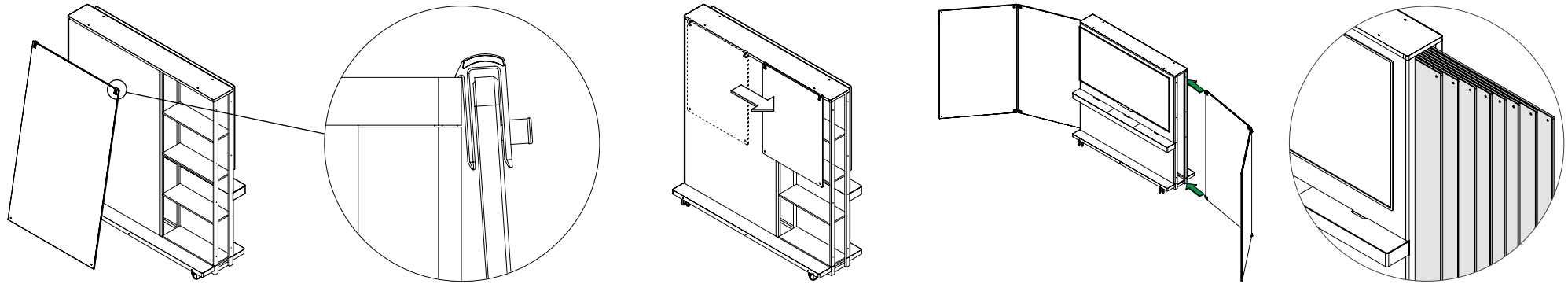


# User Manual

Mobile Frame

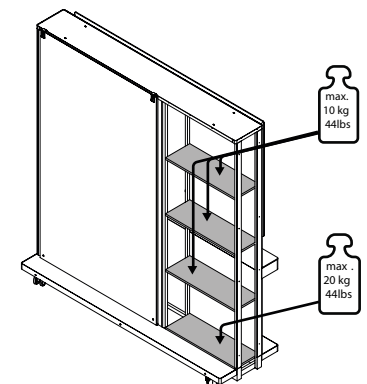
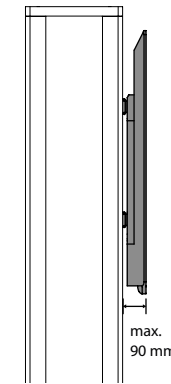
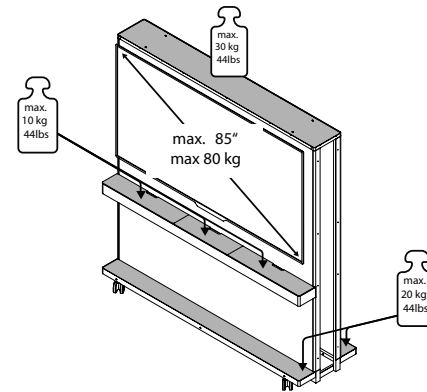
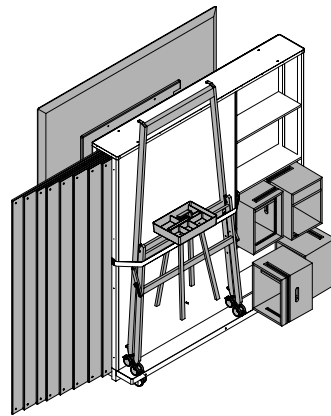
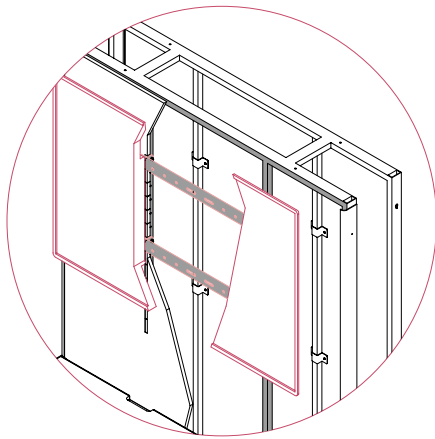
studio  
tools





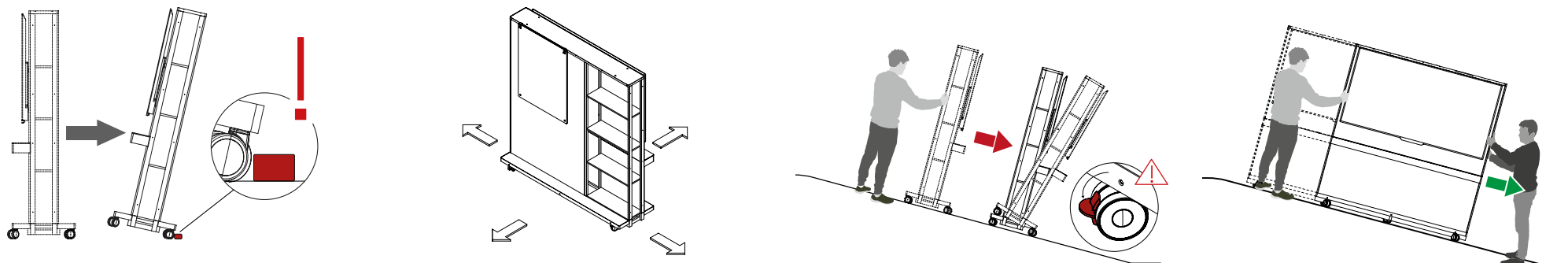
#### Studiobords

- Use only Studiotools Studiobords and Layers
- Studiobords and Layers can be put on the Board Rail with the Studiotools Magnetic Connector Clips
- Layers and Studiobords can be moved horizontally on the Board Rail
- Up to 8 Studiobords or Layers can be stowed in the Mobile Frame
- Studiobords can be connected to the sides of the Mobile Frame with the Magnetic Connector Clips
- For any additional Studiotools products please read the User Manual Flow Collection ([www.studiotools.io/pages/downloads](http://www.studiotools.io/pages/downloads))



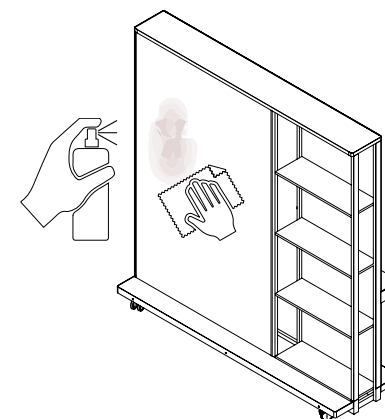
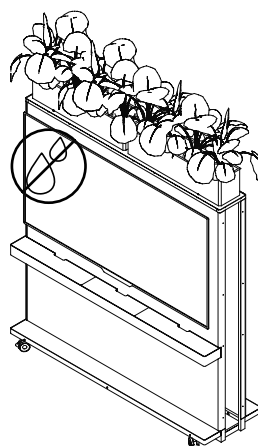
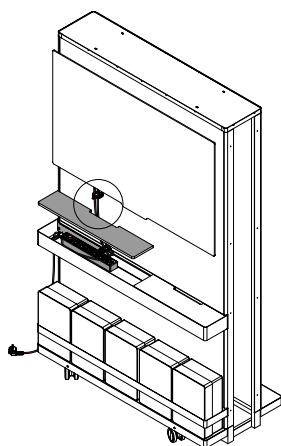
#### Caution:

- Maximum Load on Mobile Frame must not exceed 180 kg.
- Compatible with VESA Standard 50/50 - 400/600 mm
- Mobile Frame 1.2: Max 65" (recommended 50") Monitor, 50 kg and 90mm depth
- Mobile Frame 1.9 : Max 85" (recommended 75") and 80 kg, 90mm depth
- For the monitor installation, it is essential to read the Studiotools Screen Mount Assembly Instructions. ([www.studiotools.io/pages/downloads](http://www.studiotools.io/pages/downloads))
- Max. 8 Studiobords, 4 Cubes, 1 Easel and 1 Toolbox can be stowed on a Mobile Frame V19 (equals 85 kg)
- Do not step on Mobile Frame in any case.



Caution:

- Mobile Frames are to be pushed by at least two people.
- Look out for and remove any obstacles from path.
- Keep escape routes free.
- Generally move slowly and be cautious with hurdles.
- Remove any loose items from Mobile Frames before moving. The shelves must be empty.
- Release every brake before moving. Your Mobile Frame might tip and injure people severely.
- Unplug any electrical device and stow main power cable before moving.
- Ramps down lengthwise and only with two persons
- Never park on a ramp



Caution:

- Any electrification and installations should be done by professionals.
- Secure cables with cable clips and avoid large loops.
- Avoid any loose and hanging cables. This can cause serious harm to people or damages to property.
- Make sure to protect any electric device or other electrifications from water.
- Use soft, damp cloths or sponges with mild and ecofriendly detergents.
- Dust & dirt can be vacuumed from the PET panels.
- For disinfection common household disinfectants are effective
- General instructions for use:  
Studiotools products are not intended for outdoor use. Avoid prolonged exposure of the products to direct sunlight or humidity. In particular, large-surface products should not be placed directly next to heaters, air conditioners or other sources of heat or cold. Large temperature differences between the front and back can cause large surfaces to warp.