

Trolley

Assembly instructions

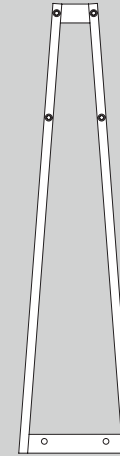


studio
tools

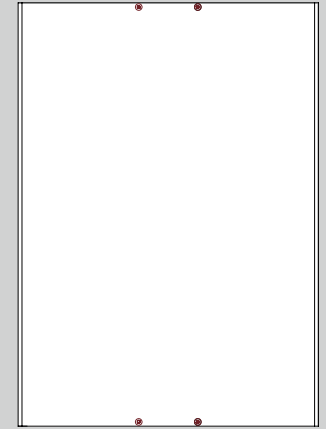
Scope of delivery



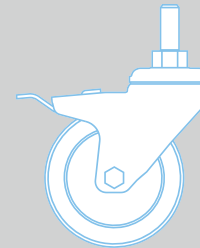
A Cross struts (4x)



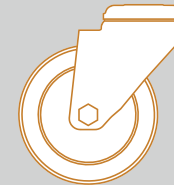
B Side frames (2x)



C Base panel (1x)



D Castors with brakes (2x)



E Castors without brakes (2x)



F Felt sticky tape (2x)



G1



G2

G3



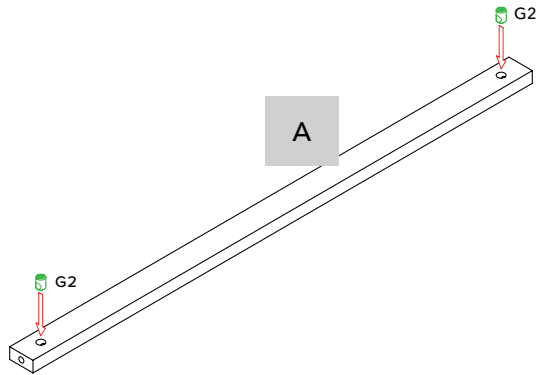
G1, G2 & G3 Quick Connectors (12x)

In case of any uncertainties or difficulty in understanding, please contact us before you start the assembly.
Diese Montageanleitung ist in Englisch verfasst. Falls Sie etwas nicht verstehen oder Unklarheiten bestehen, kontaktieren Sie uns bitte bevor Sie mit der Montage beginnen.

I Assembly of support handle

4x A Cross struts

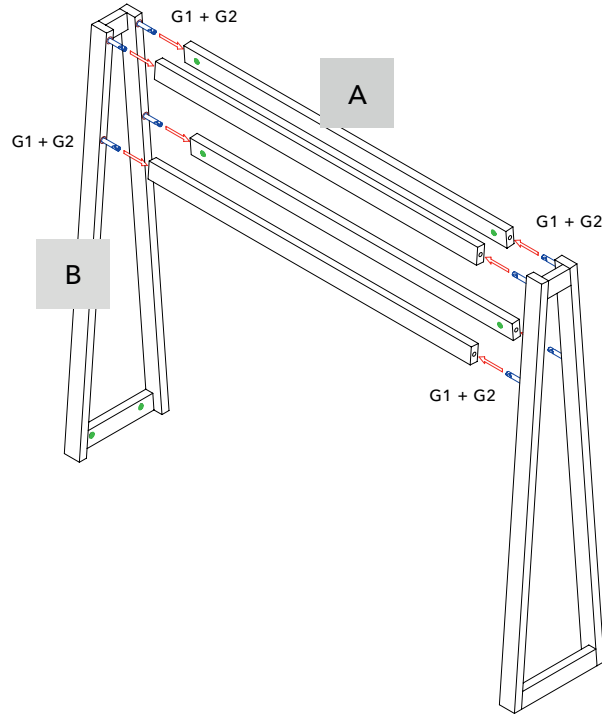
8x G2



A + B

*

See Quick Connector tips

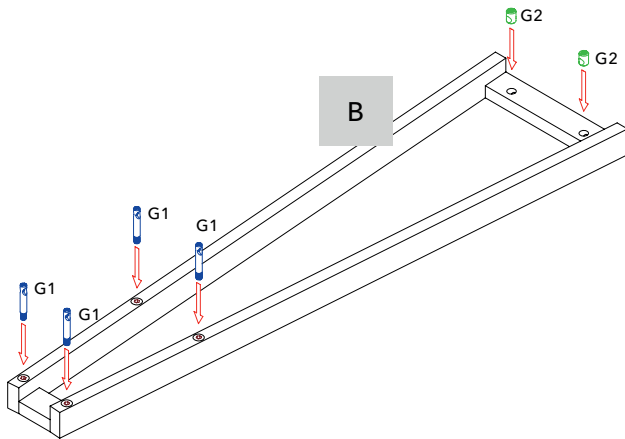
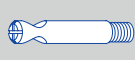


2x B Side frames

4x G2

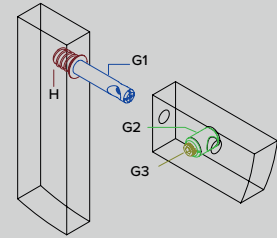


8x G1



*

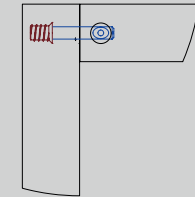
Quick Connector tips





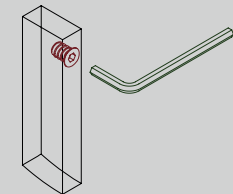
Screw the steel dowel (G1) into the preassembled steel socket (H) as far as it will go.

Push the housing (G2) into the hole in the wood. Make sure that the housing (G2) is positioned in such a way that the hole in the housing (G2) is correctly aligned and the two workpieces (G1 + G2) can be plugged together.

Screw the grub screw (G3) into the housing (G2).

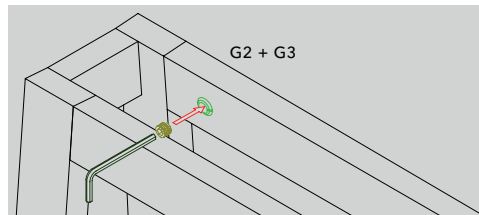


-  Optimum positioning of the steel dowel (G1).
-  Incorrect positioning. Loosen steel dowel (G1) until the holes are aligned. The steel dowel (G1) does not have to be tightly screwed into the preassembled steel socket (H), it can be loosened by up to a half rotation.



If for any reason the positioning of the steel dowel (G1) is still incorrect or too loose, the preassembled steel socket (H) can be loosened or tightened accordingly.

8x G3



G2 + G3

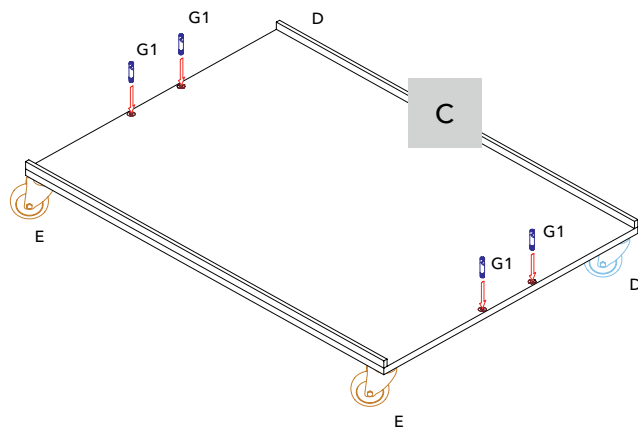
!

To prevent damage, assemble the object on a soft surface.

II Attach support handle to base panel

C Base panel

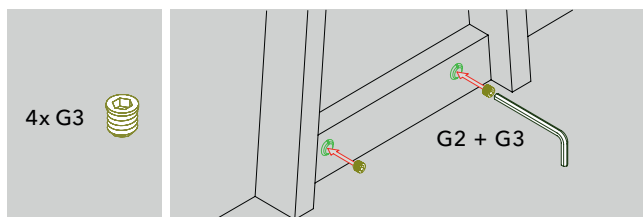
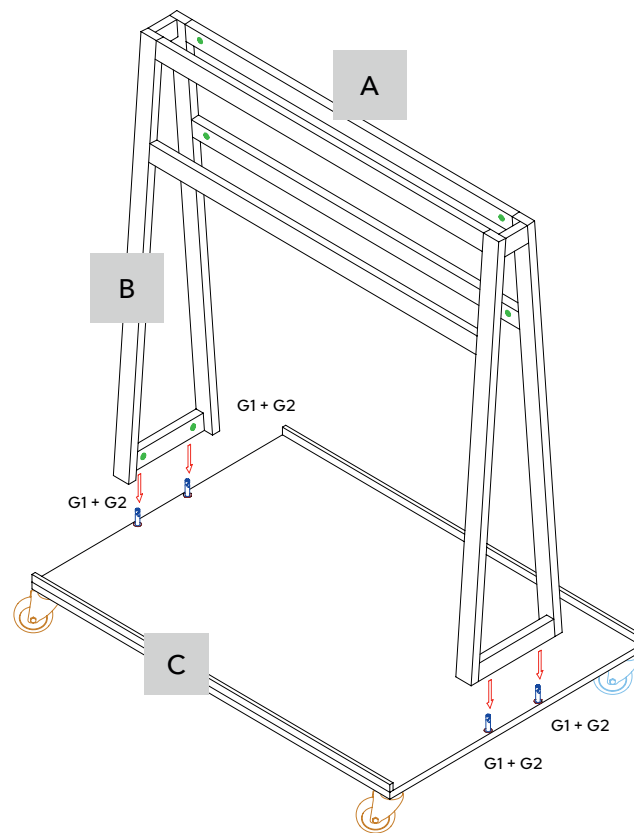
4x G1



B + C



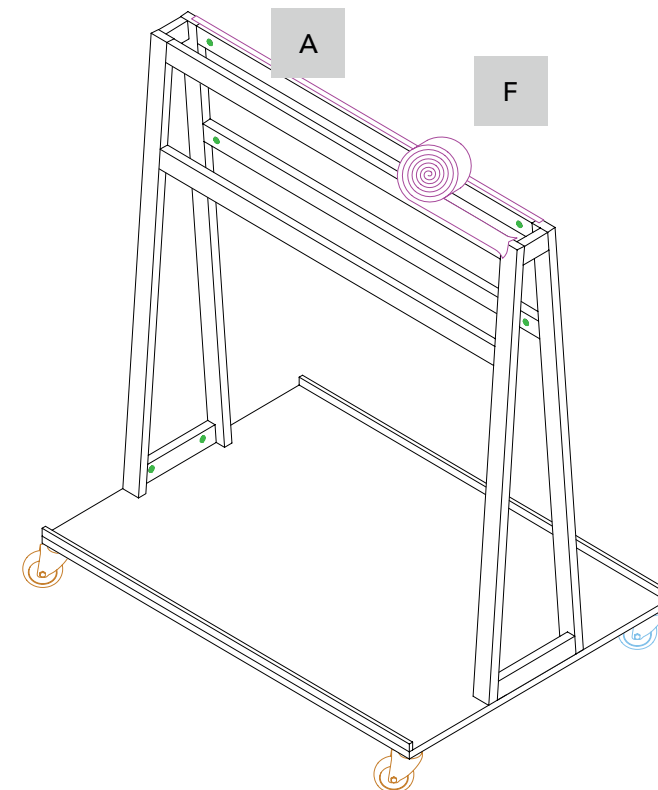
See Quick Connector tips



III Attach felt sticky tape to cross struts

A + F

2x F



To prevent damage, assemble the object on a soft surface.