

Wall Rail

Assembly instructions



studio
tools

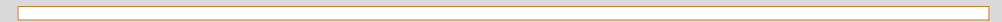
Scope of delivery



A Rail (1x)



B Magnetic screw cover (1x)



C Felt strip (1x)



D Dowels (5x)



E Screws (5x)



F1 Left end cap (1x)



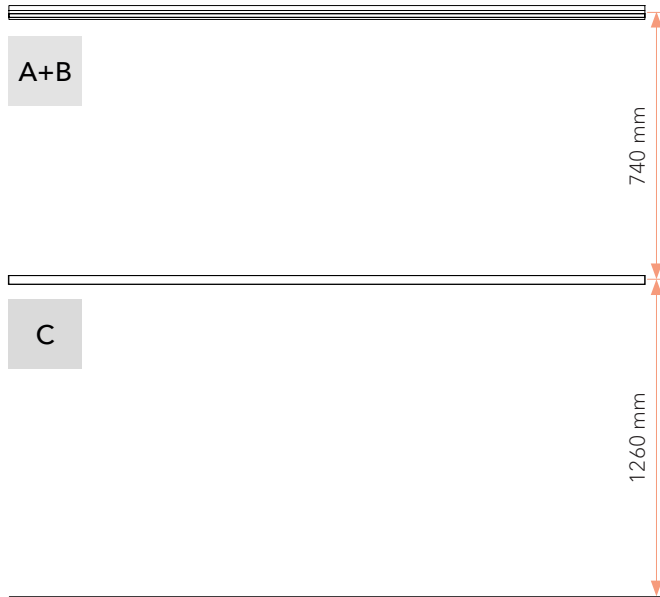
F2 Right end cap (1x)

We strongly recommend the installation of the Wall Rail by a professional. Especially if several Wall Rails are connected, a precise installation is required so that the boards do not get stuck at the joints later on.

In case of any uncertainties or difficulty in understanding, please contact us before you start the assembly.
Diese Montageanleitung ist in Englisch verfasst. Falls Sie etwas nicht verstehen oder Unklarheiten bestehen, kontaktieren Sie uns bitte bevor Sie mit der Montage beginnen.

I Decide on wall alignment of rail and felt strip

Standard alignment recommendation ***** See alignment tips



Minimal height alignment recommendation ***** See alignment tips



***** Alignment tips

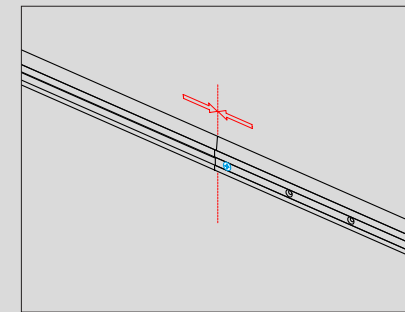
Felt strip

Use of felt strip (C) is optional. It serves as additional protection for boards and wall. If the board keeps hitting against the wall with a clacking noise, the distance between board and wall is too large and the use of the felt strip is highly recommended.

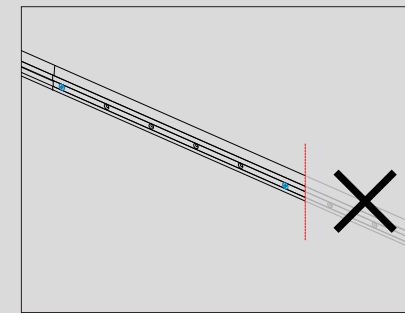
Consider the dimensions of the smallest board when attaching the felt strip (C). This ensures that all boards - regardless of format - can rest against the felt strip.

Custom alignment

There are unlimited ways of aligning the rail (A+B) and the felt strip (C), which can be customised according to the conditions of the room and the boards being used. In this way, skirting boards, cable strips or radiators can all be taken into consideration.



Add additional rails seamlessly. You can string as many rails together as your wall is long.



If necessary, the Wall Rail can also be sawn to any custom length, smaller than 2220 mm.

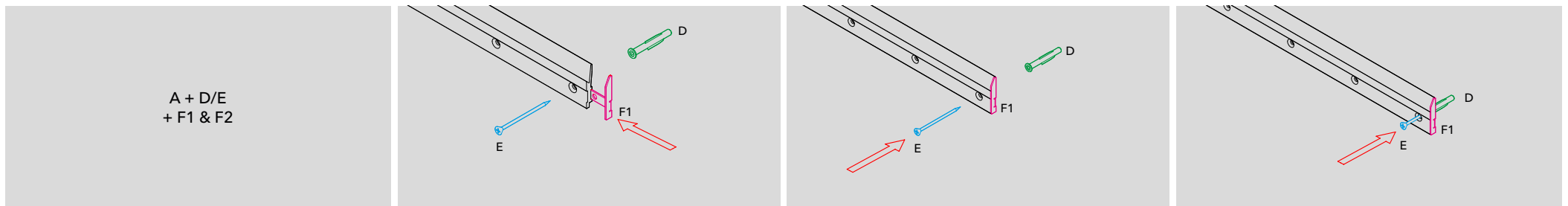
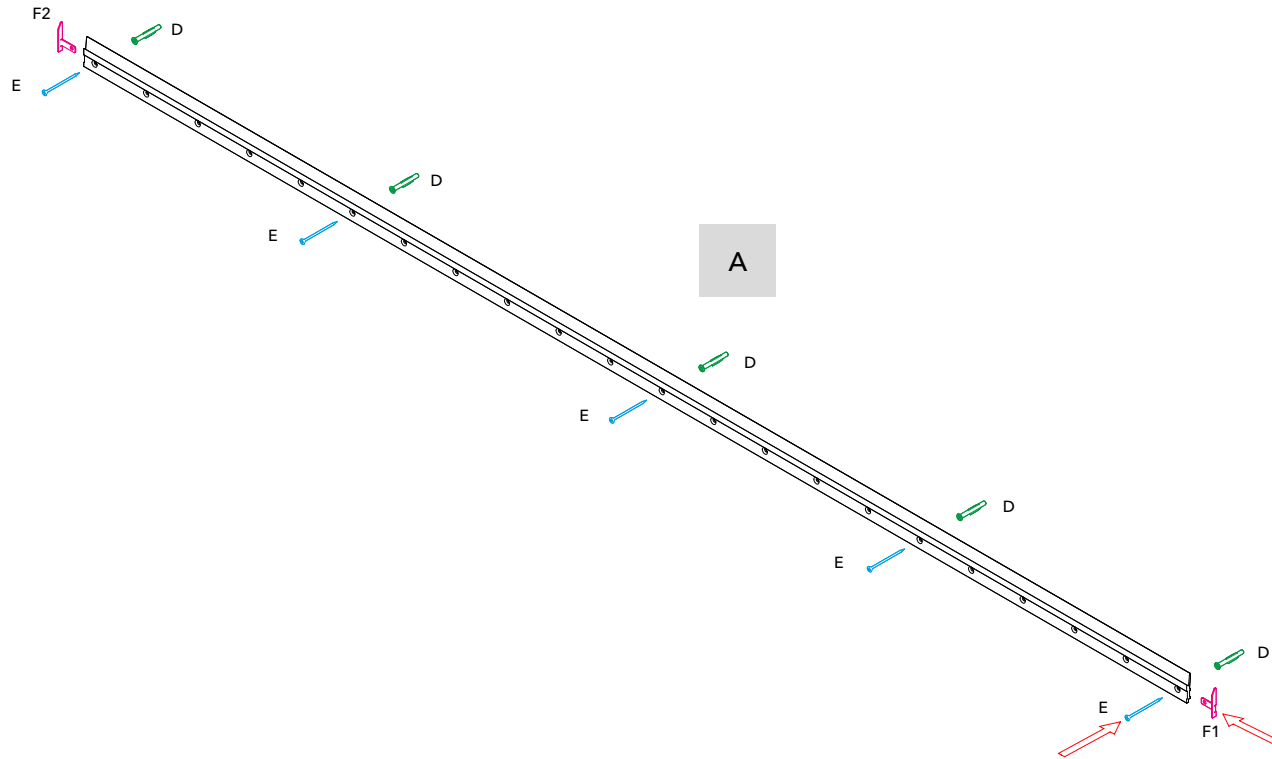
! The rail (A+B) allows you to use Studioboard and all Layers in portrait and landscape format. The following board sizes and formats can rest against the felt strip (C).

- Studioboard: portrait and landscape
- Layer 1,4 m²: portrait and landscape
- Layer 0,8 m²: portrait

! Minimum height for the rail (A+B) when you want to use Studioboard in both formats: landscape and portrait.

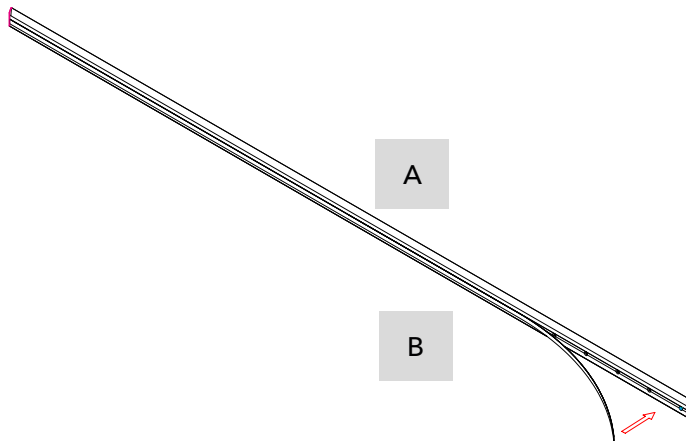
! With structural solid walls (e.g. concrete), the Wall Rail may be loaded with a maximum of 50 kilos per running meter. For all other walls, the maximum load depends on the load-bearing capacity of the wall. In this case, screws and dowels suitable for the specific wall must be used - and not the ones supplied within the scope of delivery. Make sure that holes are permitted to be drilled in the appropriate places on the wall. We accept no liability for damage caused by (improper) assembly or disassembly of Wall Rail and felt strip.

II Mount rail on wall and attach end caps to both ends of rail



! With structural solid walls (e.g. concrete), the Wall Rail may be loaded with a maximum of 50 kilos per running meter. For all other walls, the maximum load depends on the load-bearing capacity of the wall. In this case, screws and dowels suitable for the specific wall must be used - and not the ones supplied within the scope of delivery. Make sure that holes are permitted to be drilled in the appropriate places on the wall. We accept no liability for damage caused by (improper) assembly or disassembly of Wall Rail and felt strip.

III Attach magnetic screw cover to rail



IV Fix felt strip

